

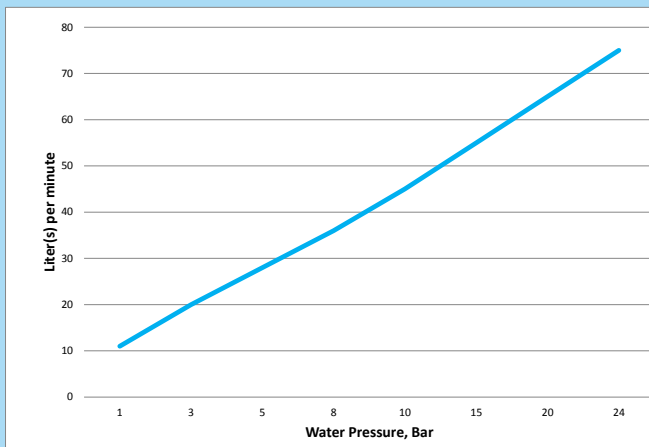
Unique products for unique challenges

Vikan Heavy Duty Water Gun



NEW
and
improved
version

- Controls water consumption
- Sturdy construction - suitable for tough environments
- Colour coded
- Adjustable water beam allows soft rinsing action of surfaces
- Operating temperature of 95° C allows rinsing of greasy surfaces



Water flow table

Housing in brass.
 Temp: Max 95° C.
 Press: Max 24 bar.

Couplings

The couplings are manufactured from chromium plated brass.
The couplings must be ordered separately depending on the hose size.

For 1/2" hoses select these couplings:



Art. no. 0700
Tap coupling



Art. no. 0701
Hose coupling



Art. no. 0712
Quick fit
coupling

For 3/4" hoses select these couplings:

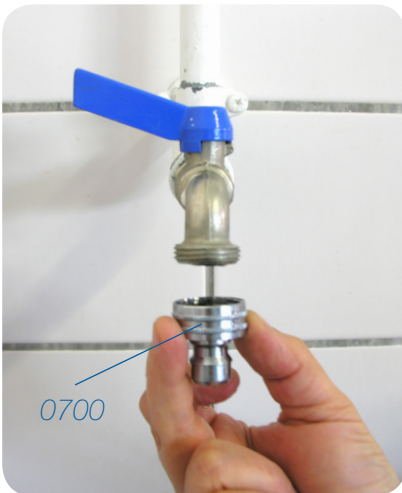


Art. no. 0716
Hose coupling

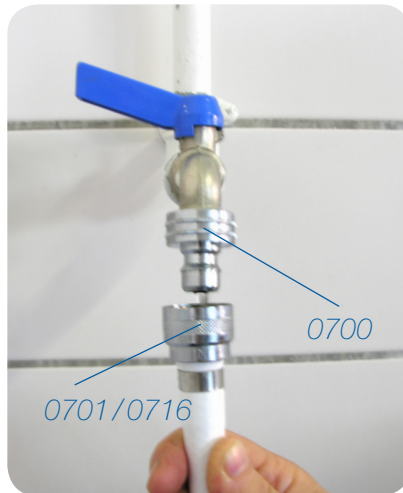


Art. no. 0715
Quick fit
coupling

Mounting



0700



0701/0716

0700



0712/0715

Hoses

Hoses mounted with 1/2" couplings [0700 x 1 and 0701 x 2].

Cold water hose:
40° C



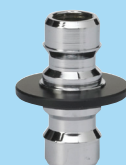
Art. no. 93315, 10000 mm
Art. no. 93325, 15000 mm

Hot water hose:
70° C



Art. no. 93353, 10000 mm
Art. no. 93363, 15000 mm
Art. no. 93373, 20000 mm

Hose connector:



Art. no. 0705
Male/Female
Coupling

Art. no.	Heavy Duty Water Gun	Description
9324	Heavy Duty Water Gun +2 +3 +4 +5 +6 +9	Heavy Duty Water Gun, squeezing the trigger determines the jet pattern, making the water gun suitable for many cleaning applications including rinsing off work surfaces and walls after chemical foaming. Order 0712 Hose Coupler for 1/2" and 0715 for 3/4" hoses.

Art. no.	Coupling	Description
0700	Tap Coupling	Male coupling w/reducing piece. For 1/2", 3/4" and M22 mm tap.
0701	Hose Coupling	1/2" hose coupling. Fits on 0700 and 0712.
0705	Male/Female Coupling	1/2" Male/Female Coupling to be used for connecting two 1/2" hoses.
0712	Quick Fit Hose Coupling	1/2" thread, 1/2" quick coupling. Fits into 9324x.
0715	Quick Fit Hose Coupling	1/2" thread, 3/4" quick coupling. Fits into 9324x.
0716	Hose Coupling	3/4" hose coupling, 3/4" hose coupling. Fits 9324x and 3/4" hose.

Art. no.	Hose	Description
93315	Cold Water Hose, 10000 mm, White	For cleaning where water is used at a maximum of 40° C. Hose ready for use. 1/2" clutch housing connected in both ends of the hose. Nipple for water tap provided for 1/2", 3/4" and M22x1 screw thread types.
93325	Cold Water Hose, 15000 mm, White	For cleaning where water is used at a maximum of 40° C. Hose ready for use. 1/2" clutch housing connected in both ends of the hose. Nipple for water tap provided for 1/2", 3/4" and M22x1 screw thread types.
93353	Hot Water Hose, 10000 mm, Blue	For cleaning where water is used at a maximum of 70° C. Hose ready for use. 1/2" clutch housing connected in both ends of the hose. Nipple for water tap provided for 1/2", 3/4" and M22x1 screw thread types.
93363	Hot Water Hose, 15000 mm, Blue	For cleaning where water is used at a maximum of 70° C. Hose ready for use. 1/2" clutch housing connected in both ends of the hose. Nipple for water tap provided for 1/2", 3/4" and M22x1 screw thread types.
93373	Hot Water Hose, 20000 mm, Blue	For cleaning where water is used at a maximum of 70° C. Hose ready for use. 1/2" clutch housing connected in both ends of the hose. Nipple for water tap provided for 1/2", 3/4" and M22x1 screw thread types.



Visit us at vikan.com

Vikan A/S

Rævevej 1
7800 Skive
Denmark

Tel.: +45 96 14 26 00
Fax: +45 96 14 26 55

vikan@vikan.com

Vikan (UK) Limited

1 - 3 Avro Gate, Broadmoor Road
South Marston Park, Swindon
Wiltshire SN3 4AG, England

Tel: + 44 1793 71 67 60
Fax: + 44 1793 71 67 61

sales@vikan.co.uk

