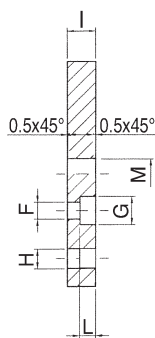
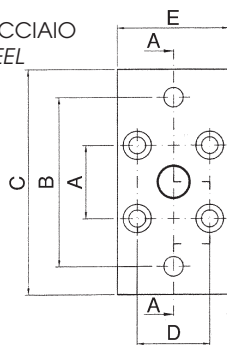


Componenti di fissaggio / Mounting Accessories

MATERIALE: ACCIAIO
MATERIAL: STEEL

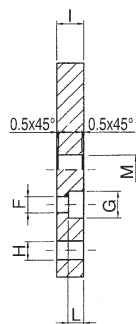
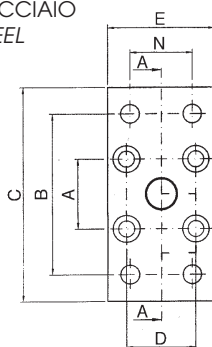


QFL

FLANGIA - FLANGE

Codice Code	Ø mm.	A	B	C	D	E	F	G	H	I	L	M
QFL012	12 - 16	18	43	55	18	29	4.5	9	5.5	10	5.4	10
QFL020	20	22	55	70	22	36	5.5	10	6.6	10	5.4	12
QFL025	25	26	60	76	26	40	5.5	10	6.6	10	5.4	12

MATERIALE: ACCIAIO
MATERIAL: STEEL

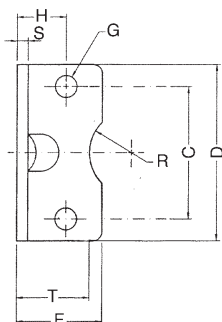
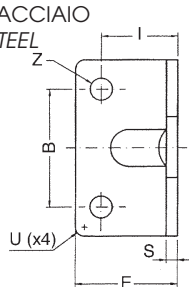


QFL

FLANGIA - FLANGE

Codice Code	Ø mm.	A	B	C	D	E	F	G	H	I	L	M	N
QFL032	32	32	65	80	32	50	6.6	11	7	10	6.4	14	32
QFL040	40	42	82	102	42	60	6.6	11	9	10	6.4	14	36
QFL050	50	50	90	110	50	68	9	15	9	12	8.6	18	45
QFL063	63	62	110	130	62	87	11	15	9	15	10.6	18	50
QFL080	80	82	135	160	82	107	11	18	12	15	10.6	23	63
QFL100	100	103	163	190	103	128	11	18	14	15	10.6	28	75

MATERIALE: ACCIAIO
MATERIAL: STEEL

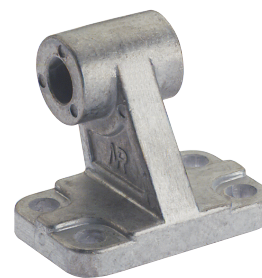
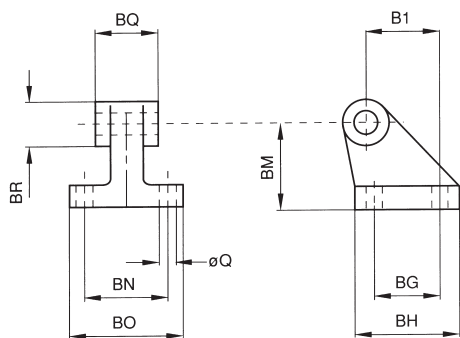


QCP

PIEDINO BASSO- LOW-RISE PEDESTAL

Codice Code	Ø mm.	C	B	D	E	F	G	H	I	S	T	R	U	Z
QCP012	12 - 16	18	18	30	17.5	17.5	4.4	13	13	3	15	9	2	5.5
QCP020	20	22	22	36	22	22	5.4	16	16	4	17	10	2	6.6
QCP025	25	26	26	40	22	23	5.4	17	16	4	19	11	2	6.6
QCP032	32	32	32	50	26	24	6.6	16	18	5	20	12	2	6.6

MATERIALE: ALLUMINIO
MATERIAL: ALUMINIUM

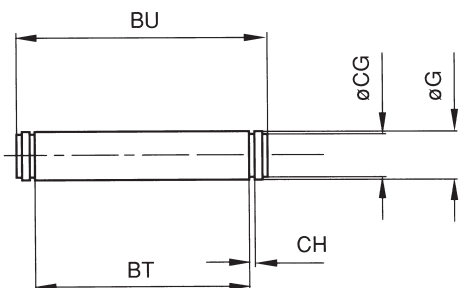


VAS

ARTICOLAZIONE A SQUADRA - SQUARE JOINT

Codice Code	Ø mm.	Q	BG	BH	BI	BM	BN	BO	BQ	BR
VAS032	32	6.6	18	31	21	32	38	51	26	20
VAS040	40	6.6	22	35	24	36	41	54	28	22
VAS050	50	9	30	45	33	45	50	65	32	26
VAS063	63	9	35	50	37	50	52	67	40	30
VAS080	80	11	40	60	47	63	66	86	50	30
VAS100	100	11	50	70	55	71	76	96	60	38

MATERIALE: ACCIAIO
MATERIAL: STEEL

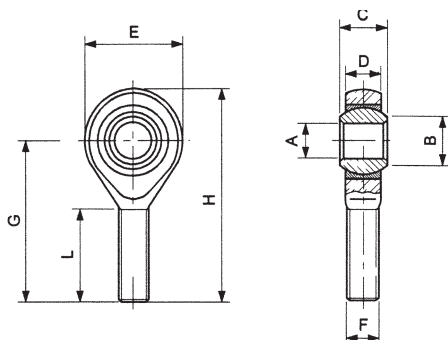


VPE

PERNO PER CERNIERA CON SEEGER - PIN WITH SEEGER

Codice Code	Ø mm.	G	BT	BU	CG	CH
VPE032	32	10	46	53	9.6	1.1
VPE040	40	12	53	60	11.5	1.1
VPE050	50	12	61	68	11.5	1.1
VPE063	63	16	71	78	15.2	1.1
VPE080	80	16	91	98	15.2	1.1
VPE100	100	20	111	118	19	1.3

MATERIALE: ACCIAIO
MATERIAL: STEEL



TM

TESTA DI BIELLA MASCHIO - MALE ROD ENDS

Codice Code	F	A	B	C	Ø	D	E	G	H	L	CARICO RADIALE		PESO
											DINAMICO	STATICO	
TM020	M5x0.8	5	7.5	8	11.11	7.5	18	33	42	19	430	1000	13
TM032	M6x1	6	8.9	9	12.7	7.5	20	36	46	21	470	1100	15
TM050	M8x1.25	8	10.4	12	15.88	9.5	24	42	54	25	780	1900	34
TM080	M10x1.5	10	12.9	14	19.05	11.5	30	48	63	28	1200	3100	70
TM100	M12x1.75	12	15.4	16	22.23	12.5	34	54	71	32	1400	3700	110