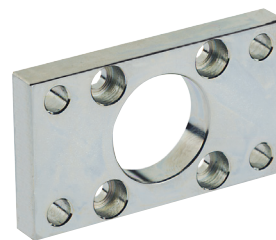
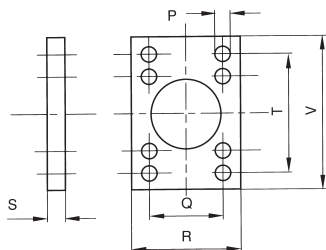


Componenti di fissaggio per cilindri ISO6431, ISO15552 e ISO 21287 Mounting Accessories for cylinders ISO 15552

MATERIALE: ACCIAIO
MATERIAL: STEEL

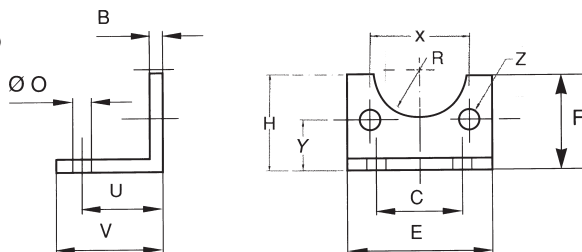


VFL

FLANGIA - FLANGE

Codice Code	Ø mm.	P	Q	S	R	T	V
VFL032	32	7	32	10	45	64	80
VFL040	40	9	36	10	52	72	90
VFL050	50	9	45	12	65	90	110
VFL063	63	9	50	12	75	100	120
VFL080	80	12	63	16	95	126	150
VFL100	100	14	75	16	115	150	170
VFL125	125	16	90	20	140	180	205

MATERIALE: ACCIAIO
MATERIAL: STEEL

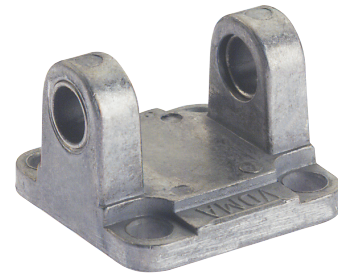
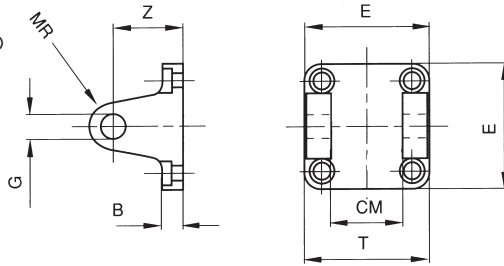


VCP

PIEDINO BASSO - LOW - RISE PEDESTAL

Codice / Code	Ø mm.	B	C	E	F	O	U	V	R	Z	X	Y	H
VCP032	32	4	32	45	30	7	24	35	15	7	32.5	15.75	32
VCP040	40	4	36	52	30	10	28	36	17.5	7	38	17	36
VCP050	50	5	45	65	36	10	32	47	20	9	46.5	21.75	45
VCP063	63	5	50	75	35	10	32	45	22.5	9	56.5	21.75	50
VCP080	80	6	63	95	47	12	41	55	22.5	11	72	27	63
VCP100	100	6	75	115	53	14.5	41	57	27.5	11	89	26.5	71
VCP125	125	8	90	140	70	16.5	45	70	30	14	110	35	90

MATERIALE: ALLUMINIO
MATERIAL: ALUMINIUM

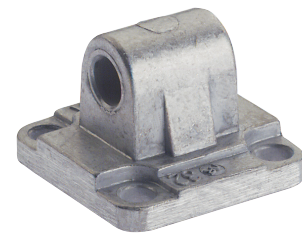
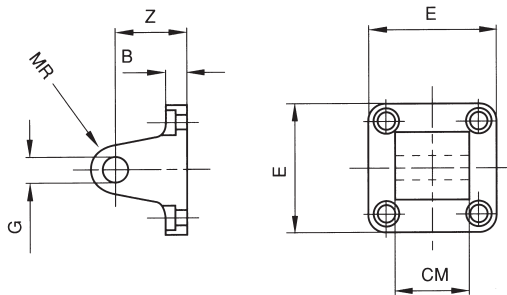


VCF

CERNIERA FEMMINA CON BOCCOLE AUTOLUBRIFICANTI - FEMALE CLEVIS BRACKET SELF-LUBRICATING

Codice / Code	Ø mm.	B	E	G	T	Z	CM	MR
VCF032	32	9	45	10	45	22	26	10
VCF040	40	9	52	12	52	25	28	12
VCF050	50	11	65	12	60	27	32	12
VCF063	63	11	75	16	70	32	40	16
VCF080	80	14	95	16	90	36	50	16
VCF100	100	14	115	20	110	41	60	20
VCF125	125	20	140	25	130	50	70	25

MATERIALE: ALLUMINIO
MATERIAL: ALUMINIUM

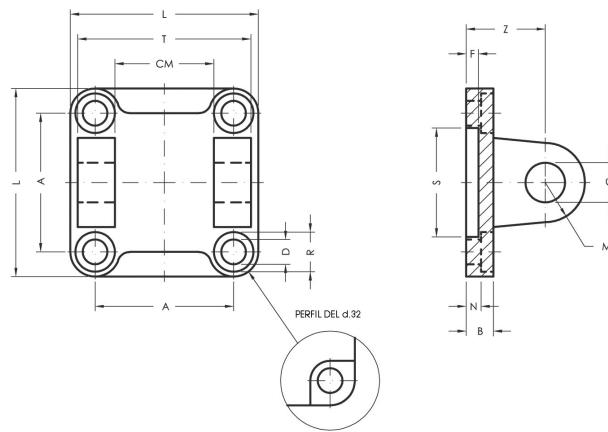


VCM

CERNIERA MASCHIO - MALE CLEVIS BRACKET

Codice / Code	Ø mm.	B	E	G	Z	CM	MR
VCM032	32	9	45	10	22	26	10
VCM040	40	9	52	12	25	28	12
VCM050	50	11	65	12	27	32	12
VCM063	63	11	75	16	32	40	16
VCM080	80	14	95	16	36	50	16
VCM100	100	14	115	20	41	60	20
VCM125	125	20	140	25	50	70	25

MATERIALE: ALLUMINIO
MATERIAL: ALUMINIUM

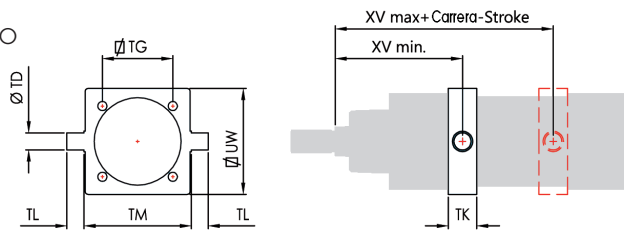


VCH

CERNIERA FEMMINA - FEMALE CLEVIS BRACKET

Codice / Code	Ø mm.	A	L	D	R	N	B	S	F	Z	G	M	CM	T
VCH032	32	32.5	45	6.6	11	5.5	9	30	5	22	10	10	26	45
VCH040	40	38	52	6.6	11	5.5	9	35	5	25	12	12	28	52
VCH050	50	46.5	65	9	15	6.5	11	40	5	27	12	12	32	60
VCH063	63	56.5	75	9	15	6.5	11	45	5	32	16	16	40	70
VCH080	80	72	95	11	18	10	14	45	5	36	16	16	50	90
VCH100	100	89	115	11	18	10	14	55	5	41	20	20	60	110
VCH125	125	110	140	14	20	10	20	60	7	50	25	25	70	130

MATERIALE: ACCIAIO
MATERIAL: STEEL

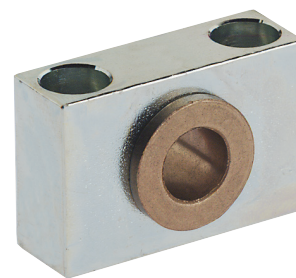
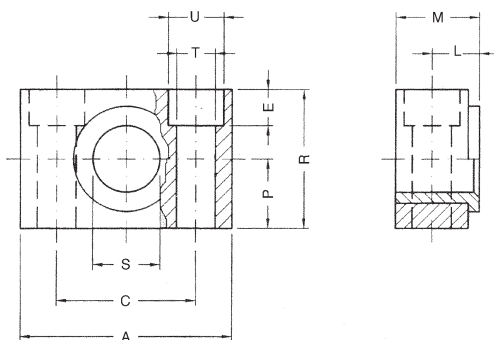


VCNT

CERNIERA INTERMEDIA - INTERMEDIATE HINGE

Codice / Code	Ø mm.	TD	TG	TK	TL	TM	UW	XV min	XV max
VCNT032	32	12	32.5	15	12	50	46	61.5	84.5
VCNT040	40	16	38	20	16	63	59	71.5	93.5
VCNT050	50	16	46.5	20	16	75	69	78.5	101.5
VCNT063	63	20	56.5	25	20	90	84	84.5	110.5
VCNT080	80	20	72	25	20	110	102	94.5	125.5
VCNT100	100	25	89	30	25	132	125	107	133
VCNT125	125	25	110	32	25	160	155	126	163

MATERIALE: ACCIAIO
MATERIAL: STEEL

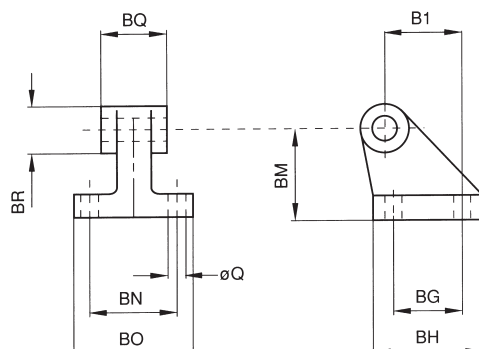


VSI

SUPPORTO CERNIERA INTERMEDIA - SUPPORT FOR INTERMEDIATE HINGE

Codice / Code	Ø mm.	A	M	R	P	C	S	L	U	T	E
VSI032	32	46	18	30	15	32	12	10.5	11	6.6	7
VSI040	40 - 50	55	21	36	18	36	16	12	15	9	9
VSI063	63 - 80	65	23	40	20	42	20	13	18	11	11
VSI100	100 - 125	75	28.5	50	25	50	25	16	20	14	13

MATERIALE: ALLUMINIO
MATERIAL: ALUMINIUM

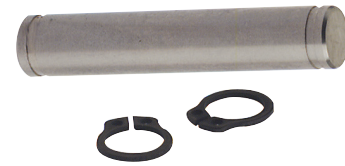
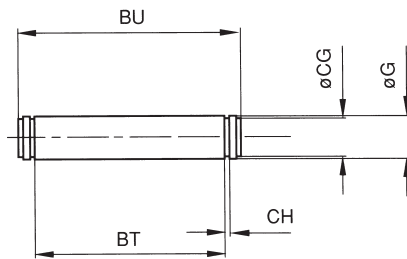


VAS

ARTICOLAZIONE A SQUADRA - SQUARE JOINT

Codice / Code	Ø mm.	Q	BG	BH	B1	BM	BN	BO	BQ	BR
VAS032	32	6.6	18	31	21	32	38	51	26	20
VAS040	40	6.6	22	35	24	36	41	54	28	22
VAS050	50	9	30	45	33	45	50	65	32	26
VAS063	63	9	35	50	37	50	52	67	40	30
VAS080	80	11	40	60	47	63	66	86	50	30
VAS100	100	11	50	70	55	71	76	96	60	38
VAS125	125	14	60	90	70	90	94	124	70	45

MATERIALE: ACCIAIO
MATERIAL: STEEL

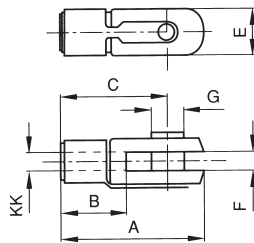


VPE

PERNO PER CERNIERA CON SEEGER - PIN WITH SEEGER

Codice / Code	\varnothing mm.	G	BT	BU	CG	CH
VPE032	32	10	46	53	9.6	1.1
VPE040	40	12	53	60	11.5	1.1
VPE050	50	12	61	68	11.5	1.1
VPE063	63	16	71	78	15.2	1.1
VPE080	80	16	91	98	15.2	1.1
VPE100	100	20	111	118	19	1.3
VPE125	125	25	132	139	23.9	1.3

MATERIALE: ACCIAIO
MATERIAL: STEEL



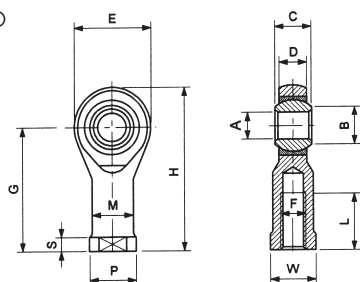
FC

FORCELLA CON CLIPS IN ACCIAIO ZINCATO - YOKE WITH LOCABLE PIN

Codice / Code	KK	A	B	C	E	F	G
FC025	M10x1.25	52	20	40	20	10	10
FC040	M12x1.25	62	24	48	24	12	12
FC050	M16x1.5	83	32	64	32	16	16
FC080	M20x1.5	105	40	80	40	20	20
FC125	*M27x2	148	56	110	55	30	30

* Con perno e seeger - With pin and seeger

MATERIALE: ACCIAIO
MATERIAL: STEEL

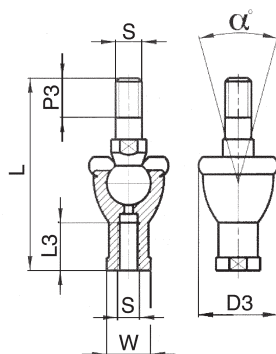


TF

TESTE DI BIELLA AUTOLUBRIFICANTI - ROD ENDS SELF-LUBRICATING

Codice Code	F	A	B	C	Ø	D	E	G	H	L	M	P	S	W	Carico radiale		Peso
															Dinamico	Statico	
		$\begin{matrix} 0 \\ H7 \end{matrix}$	$\begin{matrix} 0 \\ 0 \end{matrix}$	-0,13	SFERA	$\pm 0,13$	$\pm 0,5$	$\pm 0,5$		$\pm 0,7$	$\pm 0,7$	$\pm 0,5$	-0,7	$\begin{matrix} +0,2 \\ \pm 0,25 \end{matrix}$	kg	kg	g
TF025	M10x1,25	10	12,9	14	19,05	11,5	30	43	58	15	15	19	6,5	16	1.200	3.100	88
TF040	M12x1,25	12	15,4	16	22,23	12,5	34	50	67	18	17,5	22	6,5	18	1.400	3.700	120
TF050	M16x1,5	16	19,3	21	28,58	15,5	42	64	85	24	22	27	8	24	2.500	6.300	240
TF080	M20x1,5	20	24,4	25	34,93	18,5	50	77	102	30	27,5	34	10	30	3.700	8.300	430
TF125	M27x2	28	32,3	35	47,59	26	66	103	136	41	37	46	14	41	7.100	14.200	1.120

MATERIALE: ACCIAIO
MATERIAL: STEEL

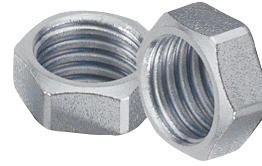
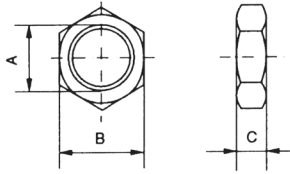


TS

FORCELLA SNODABILE - SNODABLE YOKE

Codice / Code	S	L	L3	W	P3	D3	α°
TS025	M10x1.25	74,5	18	17	15	28	30°
TS040	M12x1.25	84	20	19	17	32	30°
TS050	M16x1.5	112	27	22	23	40	22°
TS080	M20x1.5	133	38	30	25	45	15°

MATERIALE: ACCIAIO
 MATERIAL: STEEL



DA

DADO PER STELI - NUT FOR RODS

Codice / Code	A	B	C
DAM10	M10x1.25	17	8
DAM12	M12x1.25	19	7
DAM16	M16x1.5	22	6
DAM20	M20x1.5	30	9
DAM27	M27x2	41	12